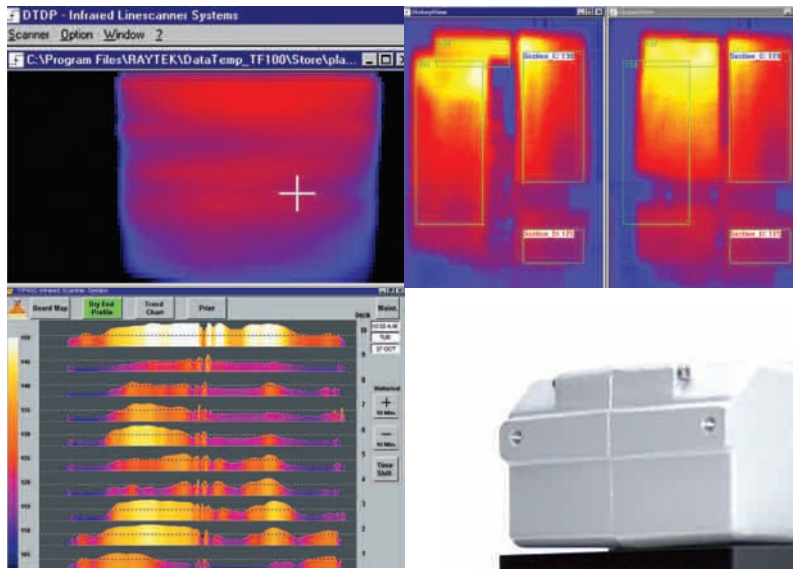


MP150



Thermal Imaging for Industrial Applications



MP150 Linescanner



The most widely used solution for real-time process temperature imaging and analysis

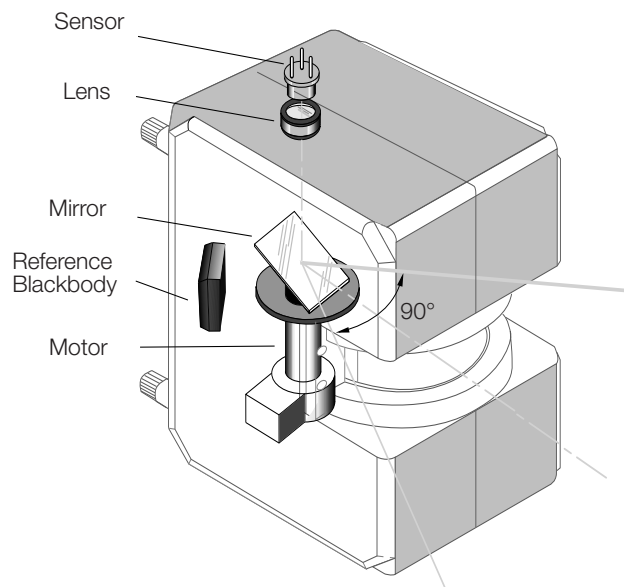
- Fast scan speed up to 150 lines per second
- Up to 1024 measurement points per line
- High optical resolution up to 150:1
- Real-time colour thermal images
- Accurate data analysis
- Rugged, waterproof housing
- 40,000 MTB brushless scanning motor
- Field-replaceable window
- Two-way digital communications
- Built-in air purge and water cooling

MP150 Linescanner with DataTemp DP Software

The MP150 Linescanner Series is a family of advanced infrared linescanners providing accurate, real-time, thermal imaging for a wide variety of industrial applications, including continuous sheet and web-based processes, discrete manufacturing processes, and rotating kilns.

The MP150 is surprisingly easy to install and manage. Pre-wired cables allow for fast, easy installation and connection to a standard PC (Windows 2000/XP). Many installations require less than an hour from start to finish. Versatile DataTemp DP Software allows custom configuration of MP150 operating parameters and display of thermal images and temperature profiles. The MP150 is designed for reliability and continuous operation in harsh industrial environments. The MP150's rugged housing includes built-in provisions for water-cooling and air-purge.

Offering best-value performance, the MP150 is the most widely used linescanner worldwide. Additional application-specific systems based on MP150 Process Imagers feature dedicated hardware and software for specialized applications such as rotating kilns, wall-board, thermoforming, and glass bending/tempering and plastic extrusion processes.



The MP150 contains the scanning mechanism, infrared detector, optics, signal processing electronics, electrical inputs/outputs, and data communications.

MP150 Models



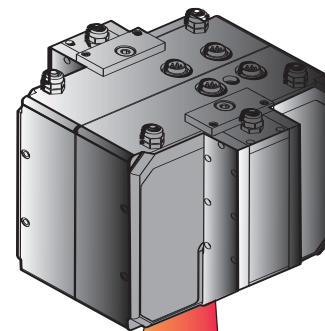
MP150 models are available with a choice of temperature and spectral ranges including special models for plastics, glass, and metals. The P3 model ensures uniform temperature measurement for thin-film plastic applications. The G5 model ensures process quality on flat glass, glass wind-

shields, and tempering lines. The 1M model measures metal surface temperatures and has a 45° field-of-view which allows the imager to be safely mounted away from hot targets.

Model Number	Temperature Range	Typical Applications
RAYTMP150LT	20 – 350°C	Printing, coating, laminating, food, drying/curing, thermoforming, textiles, plaster board, paint curing, carpeting, and flooring
RAYTMP150MT	100 – 800°C	Heat treating, ore processing
RAYTMP150G5	100 – 950°C	Surface temperature measurement for sealing, laminating, bending
RAYTMP150P30	30 – 250°C	Extrusion and converting of polyethylene, polypropylene, and polystyrene thin films
RAYTMP150P31	100 – 350°C	Extrusion and converting of polyethylene, polypropylene, and polystyrene thin films
RAYTMP1501M	600 – 1200°C	Hot strip mills, plate mills, and continuous casting
RAYTMP1502M	400 – 950°C	Hot strip mills, plate mills, and continuous casting

Edge-to-edge Temperature Measurement

Unlike point sensors that measure a single point, the MP150 measures multiple temperature points across a scan line. The MP150's motorized mirror scans at rates up to 150 lines per second. The faster scan rate allows rapid detection of temperature non-uniformities and hot spots. Rotating optics collect infrared radiation at 1024 points within a 90° field of view. A two-dimensional image is formed as the material moves across the MP150's field-of-view.

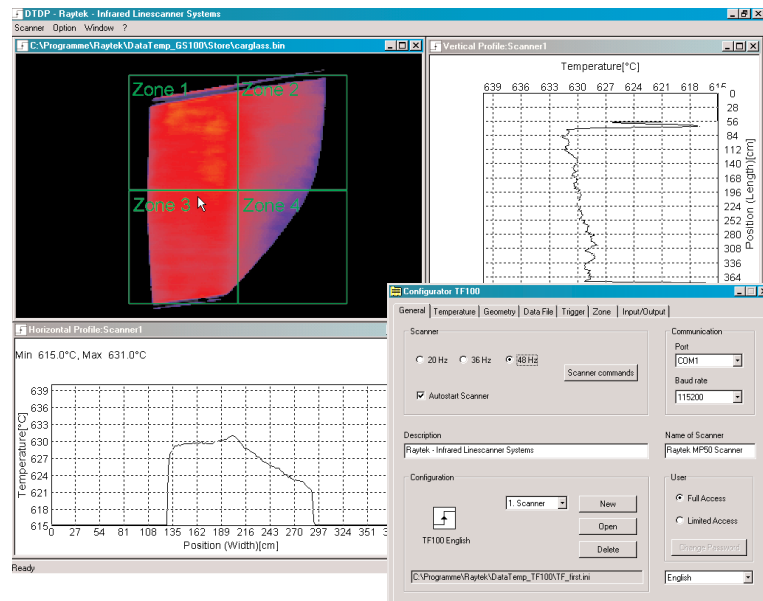


DTDP Software

Imaging

Real-time thermal imaging is provided by DataTemp DP Windows® software for temperature monitoring, display, and analysis. With DataTemp DP, you can quickly detect a hot spot or non-uniformity before it becomes a problem.

Simultaneously view cross-machine temperature profiles, contour graphs, and thermograms in multiple windows. Select a portion of the thermal image and zoom in for a more detailed view. Or, compare a stored reference image with the current image to ensure consistency. The familiar Windows® interface makes DTDP intuitive and easy to use.



The easy-to-use Windows software display can be customized to meet your process control requirements.

Alarming

The DTDP software provides features to sub-divide thermal images from MP150 into portions of specific interest. Temperatures in each portion can be processed for a certain math function like average, maximum, or minimum temperatures. In case of a thermal defect, the software triggers an alarm. For later analysis, the thermal image is automatically stored in a separate file. The alarm can also be output with an optional digital output module.

Interfacing

For interfacing to other control systems, temperature values can be made accessible in a network via an OPC or DDE server. In addition, it is also possible to output temperature values as current or voltage by means of additional hardware output modules or alternatively by using a standard serial COM port of a PC.

The OPC server provides an interface to DTDP software from OPC-compatible clients complying with the OPC software interface standard. This allows DTDP to function as an OPC server to enable communication of temperature data to third-party HMI/MMI programs. OPC can also provide a straightforward and flexible interface to user-developed software. OPC facilitates the transfer of temperature data into spreadsheets (like MS-Excel), custom OEM applications, and history files.

Features

- View two-dimensional thermal images, temperature profiles and difference images
- Define product-specific configurations
- Analyze temperatures automatically (Minimum, Maximum, Average, ...)
- Fail-safe alarm logging
- Define a reference image display
- Playback stored thermal images as a movie
- System interfaces include OPC or DDE server, analogue/digital output modules, or a serial COM port
- Supports multiple MP150 process imagers
- Specify security passwords and access levels
- Multiple language support

Application Specific Systems

Raytek offers customized process imaging systems to meet specific application requirements for kiln shell monitoring, gypsum wallboard production, thermoforming machine control, extrusion coating, and glass processing:

The **CS200E** System is a comprehensive temperature measurement system for monitoring, control, and analysis of rotating kiln shells used in cement and lime production, preventing costly kiln damage and extending production runs.

The **TF150** System allows thermoformers to visualize temperature distribution of plastic parts in thermoforming processes, reducing scrap and improving product quality.

The **GS150/GS150LE** System allows glass manufacturers to measure temperature distributions for glass annealing, glass tempering, and glass bending operations.

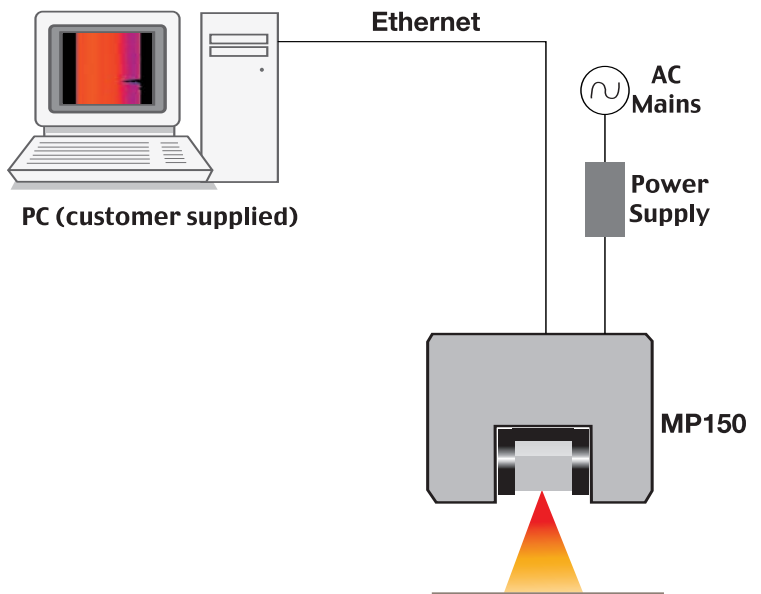
EC150 Thermal imaging and analysis for real-time defect detection and quality improvement of plastic extrusion, coating, and lamination processes.

ES150 continuously monitors web processes, for example extrusion processes.

The **TIP450** System performs detailed wallboard dryer balance analysis and board thermal mapping which results in board quality improvements, production increases, fuel savings, defect detection and rework, and manpower reductions.



The rugged cooling housing protects the MP150 Linescanner.



Easy Installation

The small size of the MP150 Linescanner allows for trouble-free installation. The MP150 connects to a standard PC operating Windows 2000/XP. The Ethernet interface insures fast and reliable data transmission to the PC. The diagram above represents a typical installation.

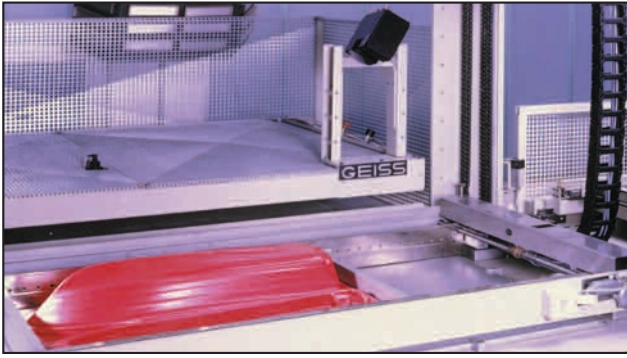
Linescanner Package

RAYTMP150	- MP150 Linescanner* with internal line laser
	- Cables for power supply, Ethernet and RS485 communication
	- DTDP Software Light
	- RS232/485 Converter
	- Manuals

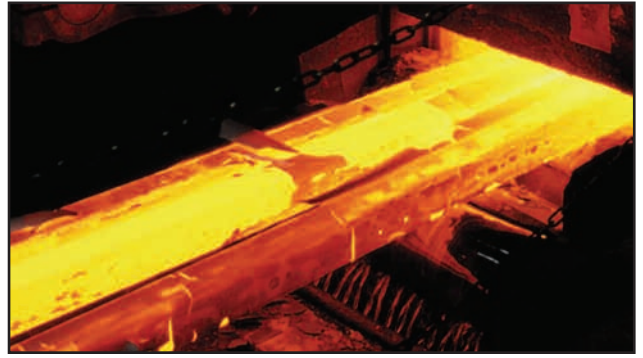
*See MP150 Datasheet for further information.

Options and Accessories

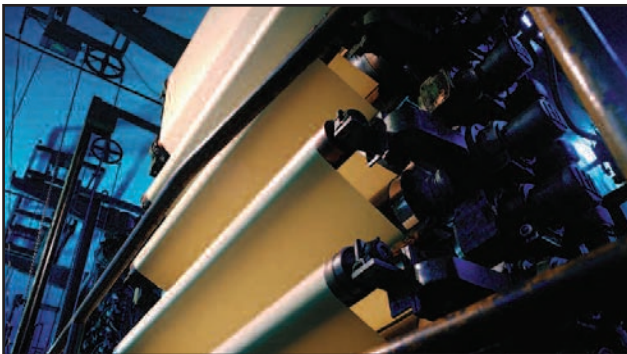
Part Number	Description
XXXTMP50ACCC	MP150 carrying case
XXXTMP50AC485CB	RS485 cable extension
XXXTMP50ACPSCB	Power cable extension
XXXTMP50ETHCB	Ethernet extension cable
XXXTMP50ARMB	Adjustable mounting base
XXXTMP50CERT	Calibration certificate
XXXSYS16DA	Digital Output Module (16 channel)
XXXSYS4AA	Analog Output Module (4 channel, mA or V)
XXXSYS485CV	RS232/485 Converter (needed for Output Modules)



The MP150 Linescanner profiles a thermoformed plastic sheet to ensure proper and uniform temperature distribution.



Accurate temperature measurement of slabs, billets, or blooms on a hot rolling mill ensures product uniformity.



Monitoring edge temperature and drying uniformity results in higher yields and reduced downtime during paper production.



Automatic hot spot detection with an MP150 Linescanner increases safety during the coke process.

www.raytek.com

Raytek Automation Products: Thermal Imaging for Industrial Applications

Worldwide Headquarters

Raytek Corporation
 Santa Cruz, CA USA
 Tel: 1 800 227 8074 (USA/Canada, only)
 1 831 458 1110
solutions@raytek.com

China Headquarters

Raytek China Company
 Beijing, China
 Tel: 86 10 6439 4691
info@raytek.com.cn

European Headquarters

Raytek GmbH
 Berlin, Germany
 Tel: 49 30 4780080
raytek@raytek.de

France
info@raytek.fr

United Kingdom
ukinfo@raytek.com

