



Technical data sheet for Dewar flasks cylindrical out of glass type G 0 to S 22 C or CAL

Area of application

- ◆ laboratory technique
- ◆ medicinal technique
- ◆ Biotechnology
- ◆ storing and company internal short-distance transport
- ◆ for liquid or solid medias and solid matters (LN₂ oder CO₂)
- ◆ Pressure-less space for coolants

Features of performance

- ◆ reliably and economically
- ◆ Dewar flasks according to DIN 12492
- ◆ glass material according to ISO 3585
- ◆ nominal capacity from 100ml to 8 litres
- ◆ protective casing out of blue-coated metal or aluminium
- ◆ side grip



Dewar flask G 9 C

Description of complete flasks

Types and accessories

- ◆ G - C = blue-coated protective casing out of metal
- ◆ G - CAL = protective casing out of stucco aluminium

Temperature ranges

- ◆ glass refill from -200°C to + 150°C, for a short time 200°C
- ◆ casing with mounting rubber and Latizell buffer from -10°C to + 60°C

Pressure range

- ◆ pressure - less

Description of glass Dewar flask

Material

- borosilicate glass 3.3 ISO 3585

Chemical characteristics

- ◆ hydrolytic resistance: according to ISO 719 (98°C)
- ◆ hydrolytic resistance: according to ISO 720 (121°C)
- ◆ acid resistance: according to ISO 1776
- ◆ alkaline resistance: according to ISO 695-A2

Physical characteristics

- ◆ linear expansion coefficient: $3,3 \times 10^{-6} 1/K$ (in between 20-300°C)
- ◆ density: 2,23 g/cm³
- ◆ specific thermal capacity: 910 J/kg K
- ◆ transformation temperature: 525°C

Vacuum

- ◆ $> 5 \times 10^{-6}$ mbar

Silvering

- ◆ fully silvered

KGW - ISOTHERM

Karlsruher Glastechnisches Werk
76185 Karlsruhe Gablonzerstraße 6
Tel: 0721 95897-0 Fax: 0721 95897-77
E-Mail: info@KGW-ISOTHERM.COM
Internet: www.KGW-ISOTHERM.COM



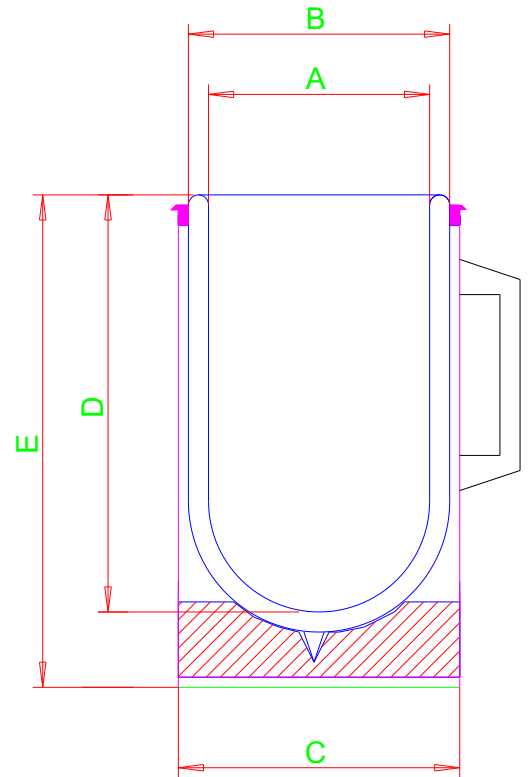
Technical data sheet for Dewar flasks cylindrical out of glass type G 0 to S 22 C or CAL

Special types

- Dewar flasks with loosely lied-on plug for gaseous medias
- Dewar flasks with PE lid and spring clips
- Dewar flasks with opposite viewing strips in CAL-version only

Safety advises and regulations

- always wear protective glasses and protective gloves
- national regulations for laboratories
- company- internal regulations
- safety regulations for handling with liquid gases



Measurements and order data

Dewar flasks cylindrical with handle, technical specifications

Type	max.Content ca. [ml]	A mm	B mm	C mm	D mm	E mm	Weight ca. [kg]	Article No.	Article No.
G 0 C	200	40	56	63	170	215	0,3	1061	1722
G 1 C	300	47	60	72	190	240	0,3	1062	1723
G 2 C	450	47	60	72	270	310	0,5	1063	1724
G 3 C	500	57	70	81	210	260	0,5	1064	1725
G 4 C	750	57	70	81	310	370	0,8	1065	1726
G 6 C	800	67	80	90	240	295	0,6	1066	1728
G 7 C	1200	67	80	90	350	395	0,8	1067	1729
G 9 C	1000	77	95	105	235	290	0,7	1068	17211
G 10 C	1500	77	95	105	345	395	1,1	1069	17212
G 12 C	1500	90	115	124	245	300	1,1	10610	17214
G 13 C	2000	90	115	124	340	390	1,4	10611	17215
G 15 C	1500	100	120	130	240	300	1,2	10612	17217
G 16 C	2000	100	120	130	290	345	1,4	10613	17218
G 18 C	2500	110	130	140	290	345	1,7	10614	17220
G 20 C	3000	138	160	165	230	280	1,4	10615	17222
GS 21 C	4000	138	160	165	310	375	2,4	10616	17223
GS 22 C	8000	138	160	165	600	660	4,6	10617	17224

KGW - ISOTHERM

Karlsruher Glastechnisches Werk
76185 Karlsruhe Gablonzerstraße 6
Tel: 0721 95897-0 Fax: 0721 95897-77
E-Mail: info@KGW-ISOTHERM.COM
Internet: www.KGW-ISOTHERM.COM